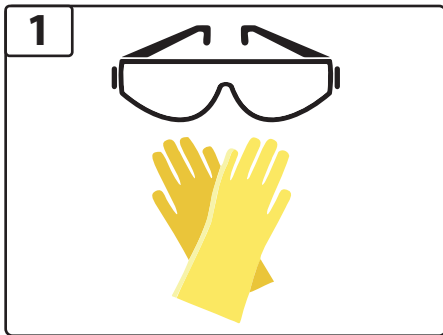


# BOTTOMS UP LINE CLEANING INSTRUCTIONS



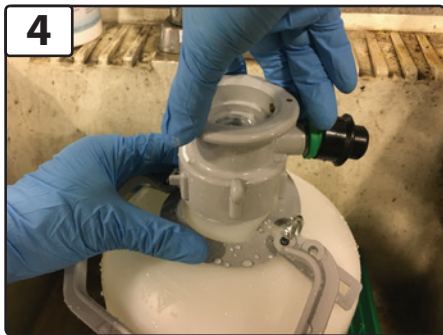
**1**  
**SAFETY FIRST** USE PROTECTIVE GLOVES AND EYE PROTECTION.



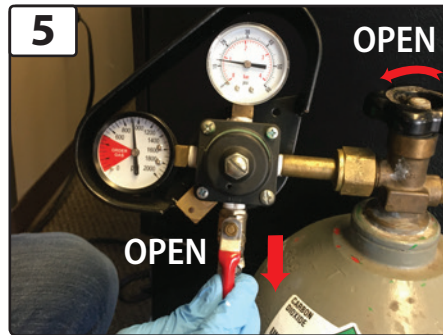
**2**  
POUR BEER LINE CLEANER INTO CANISTER  
*RATIO IS FOUND ON LINE CLEANER*



**3**  
FILL REST OF CANISTER WITH WARM OR HOT WATER



**4**  
ATTACH LID TO CLEANING CANISTER



**5**  
MAKE SURE SYSTEM'S CO2 PRESSURE IS ON



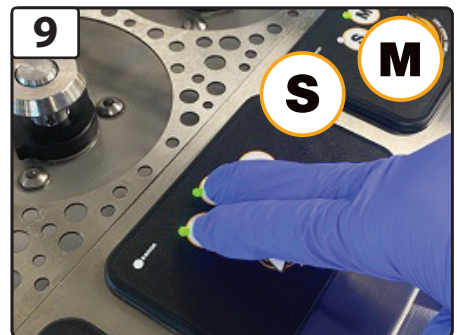
**6**  
MAKE SURE THE TOUCHPAD IS TURNED ON



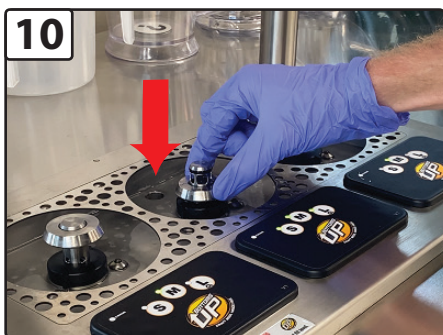
**7**  
UNTAP THE KEG OF THE LINE YOU WANT TO CLEAN



**8**  
TAP CLEANING CANISTER



**9**  
PRESS THE S & M BUTTONS AT THE SAME TIME TO ENTER PURGE MODE



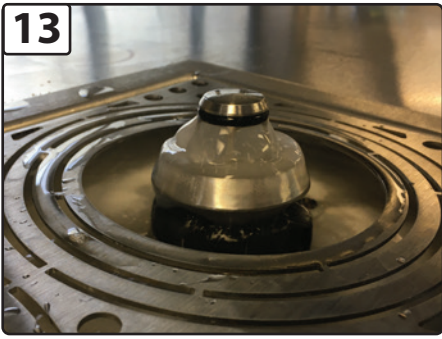
**10**  
PUT THE TAP HEAD INTO THE DOWN POSITION



**11**  
HOLD A CUP UPSIDE DOWN OVER THE TAP HEAD. THEN PRESS THE MEDIUM BUTTON



**12**  
THE LINE WILL "POP" AND CLEANER WILL START FLOWING THROUGH THE LINE



**13**  
WHEN YOU SEE LINE CLEANER FLOWING INSTEAD OF BEER, WAIT TEN SECONDS...



**14**  
PRESS THE MEDIUM BUTTON TO STOP & GO TO NEXT LINE  
*LINE SHOULD SOAK FOR 20 MINS.*

**15**  
**REPEAT STEPS 7-14 UNTIL ALL YOUR LINES HAVE BEEN CLEANED**



**15**  
WHEN FINISHED, UN-TAP AND DEPRESSURIZE CANISTER



**16**  
RINSE CANISTER AND FILL WITH FRESH, COLD WATER

**17**  
**FLUSH LINES WITH WATER**  
REPEAT STEPS 7-12 THEN SKIP TO STEP 18



**18**  
WHEN YOU SEE WATER INSTEAD OF LINE CLEANER, WAIT TEN SECONDS...



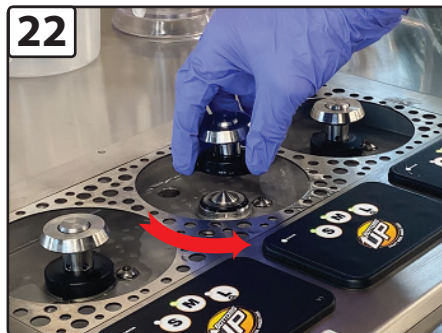
**19**  
THEN PRESS THE MEDIUM BUTTON



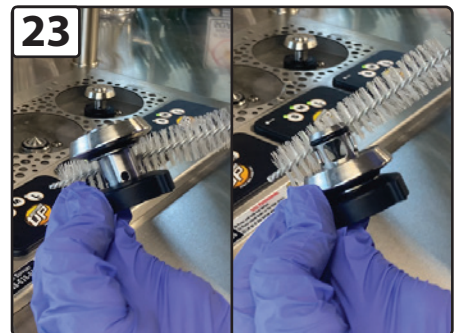
**20**  
PLACE TAP HEAD IN THE UP POSITION AND MOVE ON TO THE NEXT LINE

**21**  
**TIME TO CLEAN YOUR TAPS & DISPENSER**

AFTER FLUSHING YOUR LINES GRAB A WIRE/SCRUB BRUSH & SANITATION WATER



**22**  
UNSCREW AND REMOVE THE TAP HEADS FROM DISPENSER



**23**  
CLEAN TAP HEADS WITH WIRE/SCRUB BRUSH IN BOTH UP & DOWN POSITION



24 SCRUB AROUND EXPOSED VALVES AND RINSE CLEAN



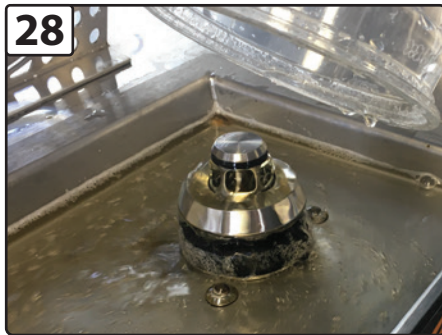
25 USING A SINK OR PITCHER, RINSE OFF TAP HEADS IN BOTH UP & DOWN POSITION



26 REATTACH TAP HEADS TO DISPENSER



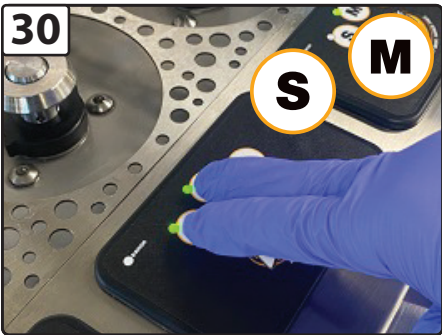
27 RE-TAP KEGS



28 REPEAT STEPS 9-14 TO PURGE ALL WATER FROM LINES UNTIL BEER FLOWS



29 TEST BEER WITH PH TESTER (READING SHOULD NOT EXCEED 5)



30 PRESS THE S & M BUTTONS AT THE SAME TIME TO EXIT PURGE MODE



31 LINE CLEANING COMPLETE! YOU'RE BACK TO FILLING FRESH COLD BEERS



# CLEAN YOUR LINES EVERY 2 WEEKS!

- NEED ADDITIONAL SUPPORT? CALL 317-388-5100 Ext. 5
- NEED LINE CLEANER/SUPPLIES? CALL 317-388-5100 Ext. 2